

Mamiya M645

Waist-Level Finder S Prism Finder

Instructions
www.ianbfoto.com

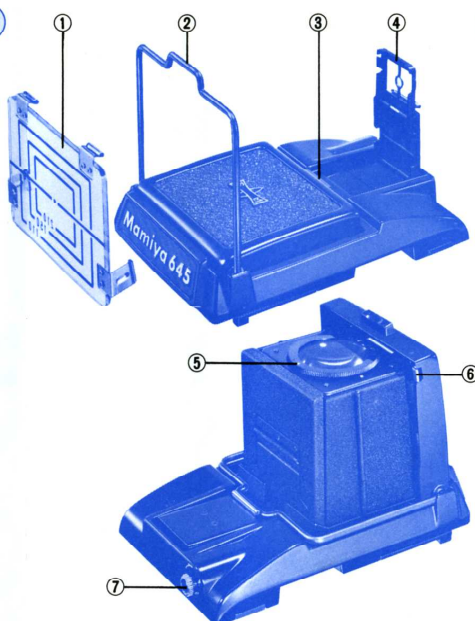


Waist-Level Finder S

Opens and closes with a single touch; magnification of $1.3\times$ (w/standard lens at infinity); diopter correction lenses interchangeable with standard magnifier; built-in sports finder shows field for standard lens and accepts a mask for 110, 150, and 210mm lenses, all fields showing approximately 80% of the picture-taking area.

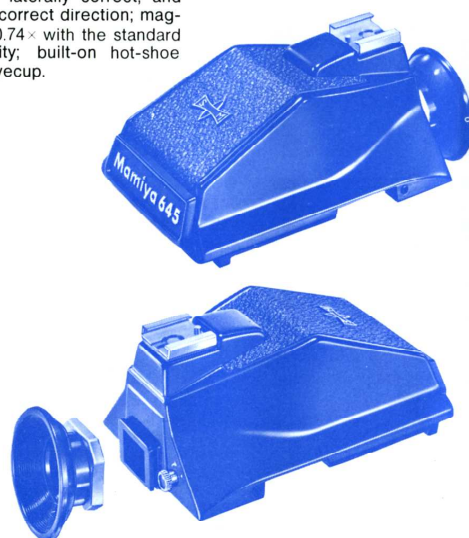
Names of Parts

1. Auxiliary mask for 110, 150, and 210 mm lenses
2. Sports finder wire-frame for standard lens
3. Finder hood opening flange
4. Sports finder eyepiece
5. Alignment dot for changing magnifier
6. Magnifier release
7. Finder release button



Prism Finder

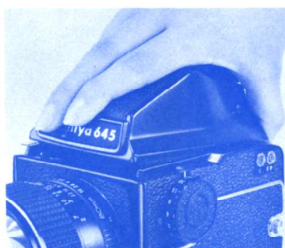
The image in the Prism Finder is right-side up, laterally correct, and moves in the correct direction; magnification of $0.74\times$ with the standard lens at infinity; built-on hot-shoe comes with eyecup.



The methods of interchanging the Prism Finder and Waist-Level Finder S are the same.

Prior to attaching the finder to the camera, confirm that the white dot on the finder release button is pointing upward.

If the white dot on the button is aligned with the white dot on the finder, by depressing the button and removing your finger from it, the white dot on the button will automatically point upward. In this condition, the button cannot be depressed; consequently, the finder will not be accidentally detached from the camera.



● Attaching Finders

Place the rear part of the finder on the camera body while holding the front part of the finder slightly upward. Slide the rear part forward until it stops and gently lower the front part of the finder on to the camera body. It will then lock into place.



● Removing Finders

1. Turn the finder release button (A) clockwise until it stops (about 60°). Then you will be able to push in on the release button.



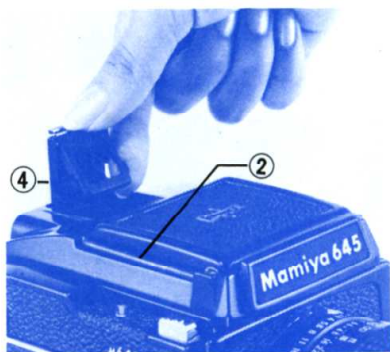
2. While pushing in on the release button with your thumb, lift the finder off the camera body.



Precaution:

Do not leave both white dots aligned by turning the button while the finder is attached to the camera. The finder may become detached when the button is occasionally depressed, possibly causing damage. If you depress the button to point the white dot upward while the finder is attached to the camera, be sure to depress the finder against the camera body; otherwise the finder will not be locked into place.

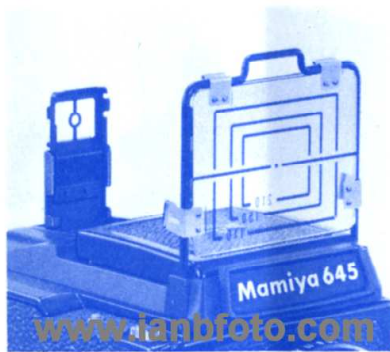
● Using the Sports Finder



With Waist-Level Finder S in the closed position, first raise the sports finder eyepiece (4) to a vertical position. The eyepiece sight folds into the eyepiece base; when lifted out of the base, the eyepiece sight will stay in a vertical position because of the eyepiece spring. Next, lift the wire-frame (2) of the sports finder.

As the Waist-Level Finder Hood can be opened even with the sports finder mask raised, focusing can be quickly and easily checked. (However, if the finder hood is first opened, the sports finder wire-frame cannot be raised.)

● Using the Auxiliary Mask



The wire-frame of the sports finder indicates the field for the 80mm lenses. When desiring to use the 110, 150, or 210mm lens, the auxiliary mask must be attached to the wire-frame.

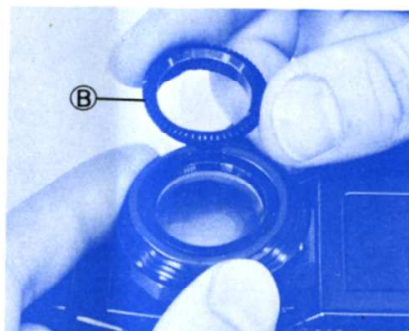
When desiring to open the Waist-Level Finder Hood, while the auxiliary mask is attached to the raised frame, first pull the bottom of the auxiliary mask out to the second notch, in order to prevent the auxiliary mask from blocking the finder hood.

Setting the auxiliary mask to the second notch has no adverse effects on the accuracy of the indicated fields; therefore, it is perfectly acceptable to use the

sports finder in this condition. Additionally, when the auxiliary mask is set to the second notch, it is also possible to lower it over the closed finder hood, although it is recommended to remove the auxiliary mask before lowering the wire-frame in order to minimize scratches on the surface of the plastic mask.

As an accessory, Mamiya offers diopter correction lenses which can be attached to the prism finders, and diopter lenses for the waist-level finder. Near and farsighted persons will find these accessories useful for obtaining accurate focus.

For the Prism Finder



● Diopter Correction Lenses

Diopter Correction Lenses in six strengths are available, -3 , -2 , -1 , $+1$, $+2$, and $+3$ diopters.

Merely unscrew (counterclockwise) the diopter correction lens retainer ring (B) from the eyecup, insert the necessary correction lens, and replace the retainer ring. Then slide the eyecup on the eyepiece of the prism finder for easier focusing.

For the Waist-Level Finder



● Diopter Lenses (Interchangeable diopter correction magnifiers)

In addition to the standard -1.5 diopter magnifier, there are five more magnifiers available: -3 , -2 , 0 , $+1$, $+2$ diopters.

While holding the finder side panels with the left hand so that the magnifier board (C) is not lowered, grasp the edge of the magnifier with the fingers of the right hand, and twist counterclockwise to remove.

Align the white dots of the magnifier and magnifier board; drop magnifier into magnifier board, and twist clockwise until magnifier clicks and locks into place.